

Operating & Maintenance Manual



Dry Steam Cleaner



Introduction

Dear Thermostar Customer,

Congratulations on the purchase of your new Thermostar Dry Steam Cleaner. This unique cleaning system is exclusively available through direct distribution and allows you to not only clean your home faster, more efficiently and more cost-effectively, but also protect your valuable furniture and other interior items since there is no need to use chemicals.

This user guide illustrates how to use your Thermostar Dry Steam Cleaner correctly and in the most efficient way in a few easy steps.

Allow yourself to be surprised at how effectively and efficiently your new Thermostar operates. Soon it will become an integral part of your household.

Please read the user guide carefully before operating the machine. Please also note the safety instructions given in the guide.

We hope you enjoy your new Thermostar!



Products for life

We sometimes think that we own nature – the truth is that we are only a part of it. And the way we treat nature will directly affect our children! We at Thermostar believe that waste should be prevented whenever possible. And with this cleaning system we have found a solution that is ecologically practical and makes good economic sense. Because products for life are only purchased once and disposed of once.

The Thermostar dry steam cleaner is not available in the conventional retail or wholesale markets. It offers outstanding quality standards as well as extraordinary guarantees – and therefore it just doesn't compare to any other commercially available product.



What is dry steam?

Commonly available steam cleaners generally work at low pressure (approx. 3 to 4 bar) and, therefore, at low temperatures. This creates a very wet steam with low cleaning capacity which can damage wood surfaces, for example. This is the reason why many such appliances often end up in the basement and are only rarely used.

Many manufacturers therefore offer steam vacuum cleaners that suction excessive moisture directly during the cleaning process. This results in the appliances being larger and their hoses being thicker and heavier. Numerous market analyses show that household appliances will only be used on a regular basis if they are light, small and convenient. Furthermore, these appliances will only function when the steam is not too hot and/or wet – which is contrary to one of the basic rules of effective steam cleaning: because less heat means less cleaning capacity. The terms dry steam, micro steam or heat cleaning are used in describing appliances that operate with high temperatures and pressures (beginning at approx. 160° C and approx. 6 bar pressure).

Larger heating elements and comprehensive safety features are generally necessary in order to generate more heat and pressure. The appliances are therefore larger and more cumbersome. Thanks to the extraordinarily powerful AKU-THERM-COMPACT heating system used in the Thermostar, it is possible to generate a very high working pressure of up to 8 bar even



in relatively small boilers. The result is an enormously powerful appliance which is practical in size and suitable for every household.

The major advantage of cleaning with dry steam is that fabrics and other surfaces do not become wet but only slightly damp. The high temperatures and speed at which the steam is discharged removes dirt and dust from its carriers. The high temperature of the steam therefore has a “releasing” effect. The hot steam particles penetrate the materials, liquefy the dirt and then draw it out from the carrier. The speed at which the steam is discharged is also a crucial factor here: higher the steam pressure, higher is the speed at which it is discharged and therefore the force of the steam.

Safety regulations

- ★ The manufacturer is not liable for damages arising from improper or incorrect use.
- ★ Do not direct the steam/hot water jet towards people or animals. Do not touch the jet directly – risk of severe burns!
- ★ The Thermostar is equipped with a pressure gauge which allows you to regulate the pressure and maintain a preset level (see “rated pressure” given on the technical label of the appliance). If steam is leaking from the lower part of the appliance, the appliance may not be functioning properly and the safety valve is limiting the pressure within the boiler. In this case we strongly recommend that you stop using the appliance, immediately disconnect the power supply and contact the customer service department.
- ★ Do not use the appliance if the power cord or other major components such as safety devices, high-pressure hoses or the handle/pistol grip are damaged.
- ★ The Thermostar is equipped with a “solids discharge” warning system. If “CALC” appears on the display, it is time to clean the boiler (see “Maintenance”). Remove the discharge cover only if the appliance has been turned off for a minimum of 5 hours (with the power cord disconnected).
- ★ This appliance is not intended to be used by children or people with restricted physical, sensory or mental abilities or without sufficient experience and/or knowledge unless they are supervised by a person responsible for their safety or have received instruction from this person as to how Thermostar is used. Children should be supervised to ensure they are not playing with the appliance.
- ★ High-pressure hoses, accessories and connections are necessary to safely operate the appliance. Only use those hoses, accessories and connections recommended by the manufacturer.
- ★ CAUTION: Before using brushes, always check them to avoid damaging any surfaces. The steam generated by the steam generator is very hot. It is therefore always necessary to test it on a small surface area. Wooden surfaces and silicone joints should only be treated with a minimum amount of steam and then immediately dried using a micro-fibre cloth.
- ★ When using an extension cord, the plug and socket must be completely waterproof. Unsuitable extension cords can be hazardous.
- ★ Never leave the optional iron unattended if it is connected to the power supply. Any alteration to the appliance releases the manufacturer from all liabilities.
- ★ The data for hand-arm vibration with respect to this appliance is less than 2.5 m/s^2 and is therefore not given here.





Technical data

Look at the technical label on the machine

Features

- ★ Stainless steel boiler (10-year warranty!)
- ★ Integrated fan for cooling the electronic system
- ★ Self-decalcifying heating element (expansion during heating process causes calcium deposits to fall off). The capacity of these elements is four times greater than equivalent spiral heating elements (28 instead of 7 W/cm² on average). They have a very long service life and can be replaced contrary to most spiral heating elements.
- ★ Self-decalcifying electromechanical float (with TrueTemp Technology for constantly high steam temperature)
- ★ 24 x 7: Constant steam – 2 tank systems allow continuous operation

Environmental



All packaging materials can be recycled. The packaging should not be treated as household waste but instead be taken to respective collection sites.



Appliances that are no longer used contain precious, recyclable materials and should therefore be taken to appropriate collection sites. Electrical and electronic appliances, batteries, oil and similar substances may not be disposed of in the environment. Please separate the waste when disposing of it.

Substances such as motor oil, heating oil, gasoline or diesel fuel may not be disposed of in the natural environment. Please protect the soil and dispose of the used oil according to the environmental regulations.

Table of

Introduction.....	2
What is dry steam?.....	3
Safety regulations	4
Component index.....	6
Keypad functions.....	8
Steam generator maintenance.....	9
Operating hours counter.....	9
Operating instructions.....	9
Using the Thermostar micro steam.....	12
Iron (optional).....	16
Steam mop (optional).....	16

PLEASE READ AND FOLLOW THIS USER GUIDE BEFORE USING THIS APPLIANCE.
KEEP IT FOR LATER REFERENCE AND PASS IT ON TO SUBSEQUENT OWNERS OF THIS APPLIANCE. IT IS ESSENTIAL TO READ THE SAFETY STANDARDS THOROUGHLY BEFORE STARTING THE APPLIANCE FOR THE FIRST TIME. NOTIFY YOUR AUTHORIZED DEALER IMMEDIATELY IN CASE OF ANY DAMAGE CAUSED DURING TRANSPORTATION.



CAUTION!
Steam ...
Risk of burning



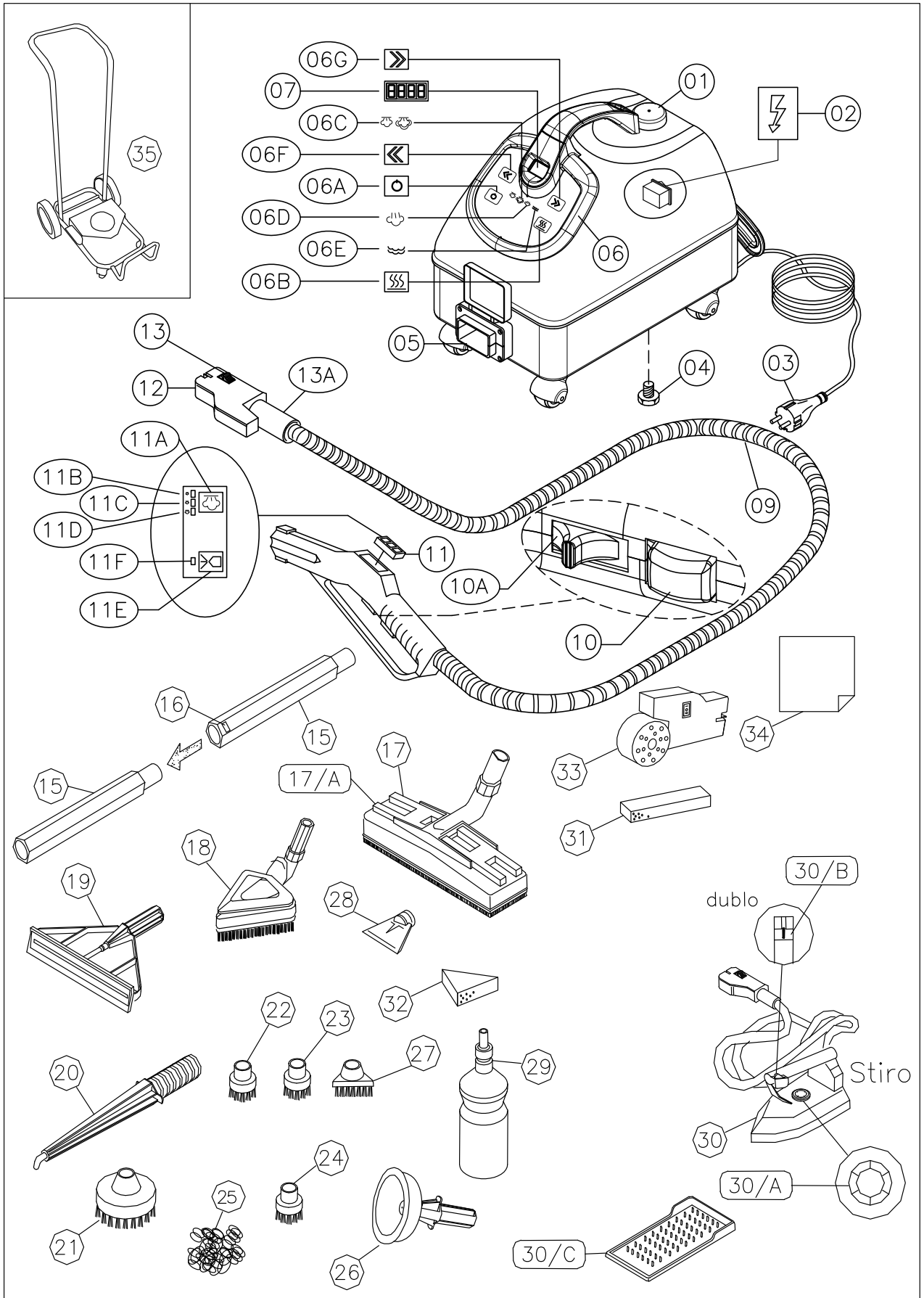
CAUTION!



Please read the
user guide



Manual;
Instructions for use



Component index*

- 01) Cold water tank cap
- 02) Main switch
- 03) Power cable and plug
- 04) Drain cap (drainage)
- 05) Connection socket for accessories
- 06) Control panel
- 06A) ON/OFF button
- 06B) Boiler on/off button
- 06C) Indicator light „steam outlet“
- 06D) Indicator light „steam present“
- 06E) Indicator light „water shortage“
- 06F) Pressure switch Menu -
- 06G) Pressure switch Menu +
- 07) Digital display
- 09) Handle/gun with steam hose
- 10) Drain steam/hot water switch
- 10A) Drain steam/hot water lock lever
- 11A) Steam selector switch (min-med-max)
- 11B) Indicator light „minimum steam“
- 11C) Indicator light „medium steam“
- 11D) Indicator light „maximum steam“
- 11E) Hot water switch
- 11F) Indicator light for hot water injection and water shortage
- 12) Steam / remote control plug
- 13) Locking button
- 15) Extension pipes
- 16) Locking button
- 17) Rectangular brush
- 17A) Cloth holder
- 18) Triangular brush
- 19) Window cleaner (optional)
- 20) Steam lance
- 21) Ø 60 black bristle brush
- 22) Ø 28 black bristle brush
- 23) Ø 28 brass bristle brush
- 24) Ø 28 stainless steel bristle brush (optional)
- 25) Steel scourer (optional)
- 26) Sink plunge
- 27) Triangular brush (optional)
- 28) Steam brush
- 29) Water top-up bottle (optional)
- 30) Iron (optional)
- 30A) Thermostat
- 30B) Steam delivery button
- 30C) Rubber mat (optional)
- 31) Rectangular pad
- 32) Triangular pad
- 33) Vaporiser (optional)
- 34) Microfibre cloth (optional)
- 35) Carriage (optional)

* Accessories included with Thermostar may vary for different countries

Keypad functions



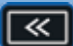
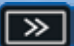
The two buttons located on the front keypad and the main switch located at the back of the appliance are used in the different operating modes.

The buttons are called as follows:

06A) Appliance On switch  hereinafter only 06A

06B) Boiler On switch  hereinafter only 06B

2) Main power switch  hereinafter only 2

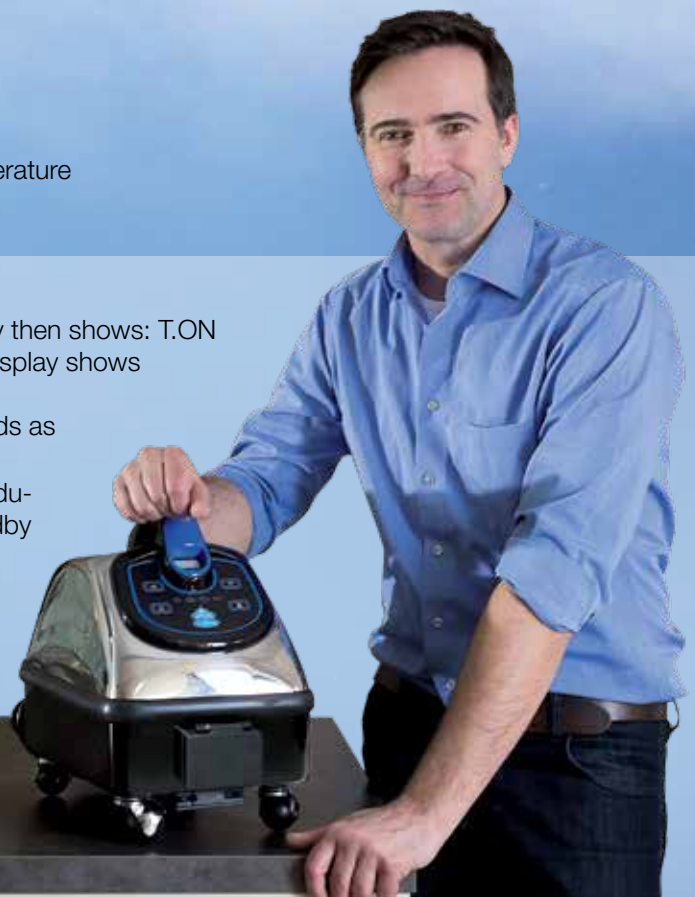
  Display change:
> Counter1>Counter2>Pressure>Temperature

Power Save Mode:

Press the boiler button (06B) for a few seconds, the display then shows: T.ON (mode activated), if the button is kept pressed again, the display shows T.OFF (mode deactivated).

If the Power Save Mode is activated, the appliance responds as follows:

- ★ Steam ironing or use with kit July: if steam is not used during a period of 1 hour, the appliance switches to Standby Mode.
- ★ Dry ironing: the appliance switches to Standby Mode every 3 hours (irrespective of whether or not the appliance is being used)



Steam generator maintenance

Removal of calcium deposits in the boiler

CAUTION: WE RECOMMEND CLEANING THE BOILER ONLY AFTER THE APPLIANCE HAS COOLED DOWN, i.e. IF IT WAS SWITCHED OFF AT LEAST 5 HOURS BEFOREHAND (WITH THE PLUG DISCONNECTED).

The True Temp Technology makes it possible to use distilled or osmosis water in the Thermostar (contrary to many other commonly available steam cleaners). It is therefore not necessary to decalcify the appliance. If you use calcium-free water and the maintenance display indicates "CALC", you can simply switch off this display (see *1).

The appliance is equipped with a maintenance alert system which activates if "CALC" is displayed alternating with the temperature. You can continue to work if this appears. Then disconnect the plug and allow the appliance to cool down for at least 5 hours. Follow the aforementioned steps to ensure that no steam or pressure is present in the boiler interior.

- 1 Switch off the appliance. (Disconnect plug)
- 2 Fill water reservoir (1) with water.

- 3 Place a suitable small tub underneath the appliance or position it on top of the kitchen sink and remove the discharge cover (04) from under the appliance. Allow all the water and calcium deposits to drain from the boiler. Shake the appliance a little to completely remove all the calcium deposits.
- 4 Replace the discharge cover (04) and refill the appliance with water (1).
- 5 Then switch on the appliance and allow the pump to run for approx. 2 to 3 minutes until the water from the bottom tank fills the boiler completely (until the pump stops making noise). The appliance is now ready to use again!

The boiler button/heater (06B) must remain off during the entire decalcification process. Do not turn the machine upside down or calcium may enter into the valves!

If you are using water with a high calcium content, it is recommended to refill the appliance with water and repeat the aforementioned steps.

*1 RESETTING THE MAINTENANCE INTERVALS CALC

Switch on the appliance by pressing buttons (2) and (06A), then press and hold button (06A) for approx. 10 seconds. "CALC" will not appear until the next time maintenance is due.

Hour counter

This appliance is equipped with two hour counters. In order to read the number of hours, switch off the appliance using button (06A) and then activate button (06F

and 06G). Pressing this button will alternatively show the hours for counter 1 and/or 2.







Operating Instructions

1 Before using your Thermostar, ensure that the surface of the appliance does not have any damage. Check if the volt and ampere ratings of your power source match the data on the appliance sticker.

2 Remove the tank cover (1) from the appliance and fill the reservoir with at least 1 liter of water. You may use straight tap water, distilled or osmosis water. Please do not fill any chemicals in your Thermostar.

3 Connect the power cord (03) to an outlet.

4 Connect the steam plug (12) to the designated appliance accessory outlet (05). Press firmly until the securing button (13) is engaged.

5 Press the main switch (2) at the back of the appliance, switch (06A) and the steam boiler button (06B) and wait for approx. 5 minutes until the indicator light (06D) is illuminated. It indicates that the boiler has steam. The switches (11A and 11E) on the handle should be off.

6 When the indicator light (06D) is illuminated, you can adjust the desired steam flow (steam button 11A) as follows:

- a. pressed 1x = Minimum steam (11B)
- b. pressed 2x = Medium steam (11C)
- c. pressed 3x = Maximum steam (11D)

Press the steam button (10) to release steam. The status is displayed on the control panel (indicator lights (06C)).

7 Using the button (11E) allows you to add hot water to the steam. Press the button only at short intervals (a few seconds) to avoid discharging the generator too quickly. The switch (11E) only functions if the boiler switch (06B) was also pressed.

CAUTION

If the water in the tank is decreasing, the red warning light "Water Shortage" (06E) switches on and the warning light (11F) on the hand grip blinks, followed by an intermittent signal tone. The power supply to the heating element is cut off until the water tank (01) is filled again.

Fill water in the tank and confirm by pressing the button (06B).

This device is equipped with a double control system that checks if there is water and thus monitors the liquid in the refill tank as well as in the boiler as follows:

The system checks both the tanks each time the device is switched on, first the boiler and then the refill tank. If the liquid level in the boiler is insufficient, the system automatically restores the liquid level in it, in which case the warning light Water Shortage switches on for the duration of this action (approx. 3 seconds).

If the warning light Water Shortage continues to remain on and is accompanied by an acoustic signal tone, then it is indicative of a liquid shortage in the tank; the tank must be filled.



USING



Using the Thermostar micro steam

General tips:

- ★ The cleaning temperature remains equally high regardless of whether you use the appliance with minimum or maximum steam. We therefore recommend doing the majority of the work at the Minimum Steam setting. Bringing the tip of the nozzle closer to the surface to be cleaned will increase the cleaning efficiency. Maximum steam is needed only where additional pressure is required to remove the dirt; such as in areas that are hard to reach (for example, radiators, corners in the shower stall, etc.) and all the areas that require more moisture to clean, such as carpets and upholstery (more steam = more moisture).
- ★ When using triangular (18) or rectangular (17) brushes with an attached micro-fiber cloth, place a steam buffer (31, 32) between the brush and the cloth to expand the cleaning area and to thus achieve optimum effect.
- ★ When cleaning parquet floors, laminates or any wooden surfaces, we recommend using only little steam/moisture. In other words, we recommend cleaning in one area only for a short period and applying steam only occasionally. The same applies to any surfaces with silicone.
- ★ We recommend using nylon brushes and triangular or rectangular brushes with an attached micro-fiber cloth to clean marble and stone. Brass brushes could damage and/or discolor them.
- ★ Carpets and sofas should be thoroughly vacuumed before steam cleaning.
- ★ Never use steam to clean untreated wood.
- ★ The micro-fiber cloths must be changed several times depending on how dirty the carpets, upholstery or floors are.

Application	Accessory and description		Level
Thawing/Defrosting	Attach the steam nozzle (20) with the steam scraper (28)		Maximum steam
Drain cleaning	First allow a little water to fill the drain and then place the drain cap (26) over the drain. Keep all the overflow openings closed and flush the drain with hot water (11E).		Hot water
Cleaning fixtures and removing calcium	Use the steam nozzle (20) and, if necessary, also the round nylon brush (22) with the stainless steel wool (25). For larger calcium deposits, also add a small amount of decalcifier (vinegar or citric acid).		Minimum to maximum steam
Exterior car cleaning	Even after using a carwash, very often stubborn dirt continues to remain on the car, such as insects on the windshield or car body or brake dust on the wheels. You can use the steam nozzle (20) to spot-clean them. Then wipe dry with a micro-fiber cloth.		Minimum to maximum steam
Interior car cleaning (fabric and leather)	Use the triangular brush for normal dirt and clean the surfaces with a cloth attached to it - old towels can be used for simple material, and we recommend micro-fiber cloths for leather and Alcantara.		Maximum steam for cushions Minimum steam for leather and Alcantara
Oven	Use the round nylon brush (21) with the stainless steel wool (25) to clean ovens. To remove stubborn dirt, move the brush back and forth forcefully and for a slightly longer period on the area to be cleaned until the stain dissolves due to the heat.		Minimum steam
Exhaust hood	Use the steam nozzle (20) to clean the grease filter. Blow maximum steam through the filter. Use the steam nozzle for the exhaust hood and wipe dry using a micro-fiber cloth. To clean corners, you can use the round nylon brush (22) if it is suitable for the surface material.		Minimum to maximum steam
Shower stall and wall tiles	In case of stubborn calcium deposits on glass doors and wall tiles, we recommend first treating the surfaces with vinegar or citric acid and allowing it to take effect for 20 minutes. Then clean the surfaces directly with the steam nozzle (20) and a micro-fiber cloth (34) or with the triangular brush (18) with an attached micro-fiber cloth (34). Any joints and grooves can be cleaned using the round nylon or brass brush(22/23). To clean stubborn dirt, you can also use the round nylon brush (21) with the stainless steel wool (25) directly on the glass.		Minimum to maximum steam
Bicycles and motor-cycles	Clean with the steam nozzle (20) and wipe dry with a micro-fiber cloth (34).		Hot water, minimum to maximum steam

Application	Accessory and description	Level
Window frames and shutters	Use either the steam nozzle (20) (wipe dry with a micro-fiber cloth (34)) or the triangular brush (18) with the attached cloth to clean. CAUTION: Apply only a small amount of moisture/steam to the wooden frames and do not hold the tip of the steam nozzle too close to the wood.	Minimum steam
Removing stains from fabrics and carpets	Place the steam nozzle (20) directly on the stain and move it back and forth quickly. Then wipe dry with a micro-fiber cloth (34). CAUTION: First ensure that the material is suitable for steam cleaning. This type of treatment may damage the structure of carpets, particularly woolen carpets.	Minimum steam
Tiles and PVC	Use the triangular or the rectangular brush (17, 18) with an attached micro-fiber cloth (34).	Minimum steam
Joints	Use the round brass or nylon brushes (22/23) and the extension pipe (15) to relax your back while cleaning. Move slowly at angles over the joints while applying little pressure. This allows you to apply more heat and less force – and your brushes will also last longer.	Minimum steam
Garden furniture Plastic and rattan	Use the triangular brush (18) with an attached cloth or even the small or large round nylon brushes (21, 22) in case of stubborn dirt. For plastic furniture, place a micro-fiber cloth between the brush and the surface to be cleaned to prevent damaging it.	Minimum steam
Glass cleaning	Simply dissolve the dirt with the steam nozzle (20) and wipe dry with micro-fiber cloths (34). Since steam contains neither calcium nor cleaning agents you can clean windows and other glass surfaces deeply and free of streaks.	Minimum steam
Polished wooden surfaces	Treat polished wood very carefully, without applying pressure. Terry towels work best for this. (Micro-fiber cloths are not suitable since they clean too thoroughly and could thus remove the polish.)	Minimum steam
Wooden furniture	Apply a small amount of steam with the steam nozzle (20) from a little further away and immediately wipe dry with a micro-fiber cloth (34). Although cleaning will take a little longer, it is gentler.	Minimum steam Not to be held in one place too long.
Radiator	Use the steam nozzle (20) to clean the radiator from the top. The dust holds together and can be wiped down.	Maximum steam
Kitchen grease on cook-tops and various metal surfaces	Depending on the sensitivity of the surface to be treated, we recommend cleaning with the steam nozzle (20), a small round brass brush (23) and/or a large round brush (21) with stainless steel wool (25).	Maximum steam



Application	Accessory and description	Level
Venetian blinds	Venetian blinds are delicate. So apply a small amount of steam with little pressure and then wipe down with a micro-fiber cloth (34).	Minimum steam
Cork (sealed)	Only sealed cork floors may be treated with steam (not oiled and polished cork floors!). Clean with the rectangular brush (17) and the attached micro-fiber cloth (34).	Minimum steam
Laminates and parquet floors	Clean with the rectangular brush (17) and an attached micro-fiber cloth (34) - use only a little moisture (press the steam button (10) only occasionally). Steam will not damage parquet floors and laminates if used properly. (Comparison: A sauna at 90 °C is no problem but a bath at this temperature is impossible.) Microsteam is also better and gentler for surfaces to be cleaned than wet cleaning or commonly available steam cleaners!	Minimum steam
Leather	Clean with the triangular and rectangular brush (17, 18) and an attached micro-fiber cloth (34). Press the steam button (10) only occasionally (do not hold down continuously). Do not clean old or broken leather. Apply a leather conditioner after cleaning.	Minimum steam
Mattresses, upholstery, carpets	Clean with the triangular or rectangular brush (17, 18) and an attached micro-fiber cloth (34). Always test in a concealed area to verify that the surface is colorfast. For sensitive materials, apply steam with the steam nozzle (20) from a distance of 10 cm and then wipe dry the surfaces with a micro-fiber cloth (34).	Maximum steam
Plants	Apply a little steam to the plants using the steam nozzle (20) from a distance of 40 to 50 cm. From this distance the steam is no longer hot, but comfortably cool.	Maximum steam
Bathrooms and sanitary equipment	Large areas can be cleaned with the triangular or rectangular brush (17, 18) and an attached micro-fiber cloth (34); use the steam nozzle (20) with or without brushes (22) to clean corners, slots and other areas that are hard to reach.	Minimum to maximum steam
Watchbands and jewellery	Place jewellery or watchbands on a micro-fiber cloth (34) and clean with the steam nozzle (20) at close range and polish. CAUTION: Apply steam only to the watchband and not directly to the watch case!	Minimum steam
Animal cages, metal grates and any areas hard to reach	Simply clean with the steam nozzle (20) and wipe dry with a micro-fiber cloth (34).	Minimum to maximum steam
Toilet	Clean without any chemicals! The inner edges of the toilet can be cleaned lightly using the hot water function (11C). Simply apply a little steam to the rest with the steam nozzle (20) at close range and wipe dry.	Hot water



Iron (optional)

The iron (30) is connected directly to the Thermostar using the connector cable. Use the Thermostat (30A) to adjust the iron to a temperature which is suitable for the material to be ironed.

Wait until both appliances have reached the operating temperature before pressing the steam button (30B) on the iron.

Our iron has a base made of pure aluminium. Since it could oxidize, we recommend using a Teflon base (30D) which is suitable for ironing all types of materials. Always place the iron after use on the rubber mat (30C) provided.



Steam mop (optional)

The steam mop is ideal for cleaning large areas, regardless of whether this involves floors or walls (vertical areas). It is light and extremely easy to handle and has a 5 m long hose (option 10 m), a telescopic pipe and cloths (40 x 40 cm) made of cotton or polyester or micro-fiber (optional). The steam adjustment control (min-med-max) is located directly on the handle.



Thermostar Handels GmbH

Auen-Süduferstraße 67
9220 Velden
Office: +43 (0) 4274 2821
Fax: +43 (0) 4274 2821 4

UID: ATU65046906
FN329029t

www.thermostar.info
info@thermostar.info

